



## COMMERCIAL SALON REFURBISHMENT

### Location:

Prestigious hairdressing salon in Wimborne town centre, Reeves and Gallagher

### The Brief:

*COMPLETE REFURBISHMENT OF HAIRDRESSING SALON TO INCORPORATE ADDITIONAL WASH STATIONS, NEW RECEPTION AREA, STAFF ROOM AND OFFICE.*

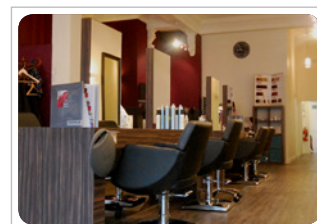
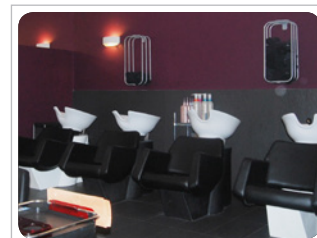
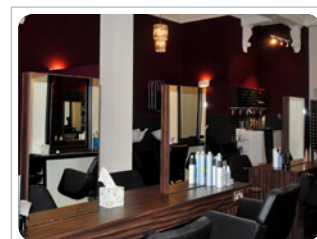
The client wanted a complete refurbishment to their hairdressing salon which needed modernisation and extra client wash station areas to maximise earning potential. They wanted to create an opulent and indulgent feel whilst keeping to strict deadlines and budgets. The salon needed to be stripped and refitted to the highest standards within 2 working weeks to minimise loss of business.

### The requirements for single storey extension:

- Removal of existing shop fittings
- Installation of new boiler and blended hot water supplies
- Reposition lighting and electrics to new layout plan
- Form new staff room area and new office
- Create new tiled wash stations and colour mixing bar
- Install kitchenette
- Decorate throughout the salon
- Lay 'Karndean' flooring to main salon area
- Fit all mirrors and cutting tables etc

### The transformation:

The building was transformed over two weeks into a stunning, prestigious salon opening up the area to accommodate more clients with a relaxing and luxurious feel. Also accommodating a new plush reception area, coffee station, staff room and office area.



### Testimonial:

*"We are amazed at the transformation within 2 weeks and how smoothly it went. All the tradesman were reliable, friendly and professional. We are delighted with the results and our clients love the new salon".*